



# **SafetyTracker**

Technology Solutions for Safety & Automation

**Features:**

**Replaces Manual Inspections:**

Empower your employees with automated tools to perform and capture inspection data – reducing manual errors and increasing efficiencies and productivity.

**MSHA Compliant Safety Reporting:**

Safety tracker provides governmental (local, state and federal) compliancy reporting for Safety equipment.

**Located Inventory:**

Provides located serialized inventory by user-defined physical locations.

**Customizable Inspection Templates:**

Safety tracker delivers default inspection templates but also provides the ability to custom define inspection points based on industry specific requirements.

**Exceptionally Rugged Construction:**

Passes industry's most stringent drop and tumble tests; IP64 sealing rating; integrated internal antennas. Flexibility to use in nearly any environment; dramatically reduces repair and downtime costs; delivers enterprise performance and ROI.

**Explosion Protection:**

MSHA Certification pending for use in hazardous environments. Class I Division I GPC D, T4 Ex

**Integrated 802.11 a/b/g WLAN radios:**

Flexible always-on connection maximizes productivity: Compatible with any WLAN; technology differentiating features that deliver superior, reliable wireless connectivity

**Barcode / RFID:**

Forward scanning, pistol grip or brick form factor reduces user fatigue in scan intensive applications. System is "RFID-ready" RFID module will be released upon equipment certification.

## AUTOMATE YOUR SAFETY INSPECTION PROCESSES

**Safety Tracker** is the first "MSHA-Compliant" Safety PPE (Personal Protection Equipment) Inspection and Tracking solution!

**Written for the Mining Industry** in conjunction with mining personnel and safety inspectors, this inspection tool reduces Underground time required to physically inspect and report on SCSR's and other customer defined equipment.

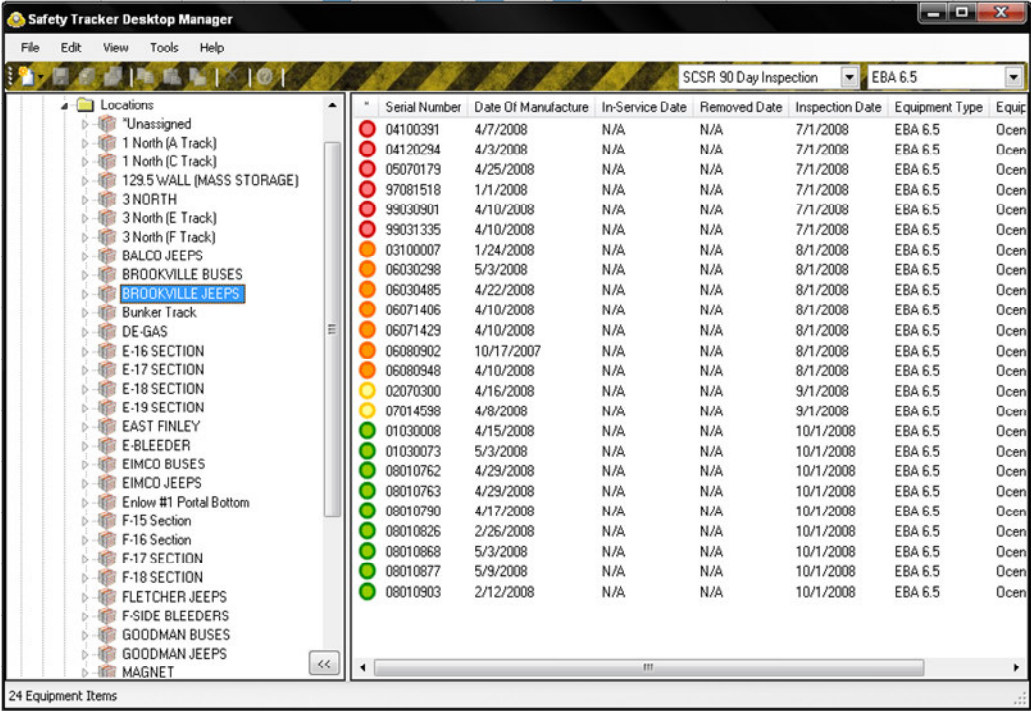
**Import Wizards** allow the uploading of existing equipment databases into the Safety Tracker platform. In addition, the standard Windows "Look and Feel" provide an intuitive training experience which reduces the learning curve. Built upon standard SQL and Microsoft Windows platform enable the Safety Tracker Software to easily integrate with customer's existing systems; however the system is fully contained and can run as a standalone application.



**MSHA-Approval Pending** Class I Division I Explosion proof Windows Mobile Barcode hardware. Safety Inspectors can take the handheld Windows Mobile device down into the hazardous areas to perform safety inspections where they have been unable to in the past. Then data collected is then synchronized with a SQL Server to provide reporting and inspection data across the enterprise.

Markets	Applications	Users
Coal Mining	SCSR Inspections	Safety Bosses
Open Pit Mining	PPE	Safety Coordinators
Strip Mining	Personnel	MSHA Inspectors
Highwall Mining	Food Stores	OSHA Inspectors
Mineral Mining	Safety Kits	OEM Repair Reps
Mining Equipment	Miner's Head Lights	
Oil/Gas	First Aid Kits	
Fire/Safety	Fire Extinguishers	
Search & Rescue		
Maritime		
Department of Defense		

# ! Desktop Application



➤ Desktop Management View

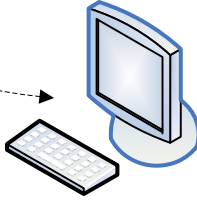


➤ Load Inventory/Location Records

# ! Handheld Application



Synchronize to Server



Reporting

## Window Mobile Device Technical Specifications

<b>Keyboard:</b>	28,43,53 keys	<b>Display:</b>	3.8" ¼ VGA color touch screen display
<b>Barcode Specs:</b>	1-D Long Range Scanner	<b>Dimensions:</b>	9.2" x 3.6" x 7.6" (234 mm x 91 mm x 193 mm)
<b>Weight:</b>	Approx 27 oz (830 g)	<b>Ambient Temp:</b>	-4F up to 104 F (-20C up to 40C)
<b>Humidity:</b>	5% to 95% (non-condensing)	<b>Storage Temp:</b>	-40F up to 158 F (-40C up to 70C)
<b>Protection Class:</b>	IP64	<b>CPU:</b>	Xscale PXA270 processor at 624 MHz
<b>Memory:</b>	RAM/ROM 64/128 MB	<b>Operating Sys:</b>	Windows Mobile 5.0/English
<b>Interface:</b>	WLAN, RS232, USB v.1.1 (Client)	<b>Application Dev:</b>	C#, VS.net, Motorola SDK
<b>Database-Mobile:</b>	SQL mobile (bundled)	<b>Database-Server:</b>	SQL 2005 Required (customer supplied)
<b>Power Supply:</b>	Replaceable Li Ion battery pack (2200 mAh/7.4V)	<b>Backup Battery:</b>	Ni-MH Battery (rechargeable) (15 mAh/3.6V)

**EXPLOSION PROTECTION:**

**Classification:** Class I Div I GP C, T4, Ex, ia

**UL for US/Canada:** File No. E226123

As seen at:



Mining Safety Tracker, © Snively Incorporated 2008. All Rights Reserved. All other product or service names are the property of their respective owners.

For more information, please contact Snively Incorporated, 7980 Mentor Avenue, Mentor, OH 44060. www.SnivelyInc.com - Phone 440-974-9937. Specifications are subject to change without notice.

