

**Purchase Orders:** Daily cost report. Multiple vendor selection. Maintains detail history. Provides Vendor Analysis Reports. Automatic alerts for purchases under warranty. Tracks mine supply costs. Produces commitment reports and Cost Per Ton reports. Provides PO inquiry through various criteria. May be interfaced with Inventory, Payables, and Equipment Maintenance.

**Inventory:** Tracks: items by vendor, min/max, category and warranty information, average costs, "On Order" items. Maintains last issue date and last order date. Allows cross-references for alternate vendors and pricing. Provides information on "On Order" Lists, Over/Under Stock report, detail inventory reports by general ledger account, mine/location, transaction type and date range.



**Equipment Maintenance:** Tracks history of equipment repairs, maintenance, downtime and availability. Generates work orders by days, tons, hours or miles. Tracks production for Underground, Longwall, Highwall and Surface mine operations. Allows for data entry on hand held PC's. Tracks at component level. Provides corporate reporting with consolidation of all locations or divisions.



**Production System:** Tracks Mine Production for Underground, Longwall, Highwall or Surface Mines. Provides Detail cost analysis reporting. Tracks production costs. Calculates daily and monthly cost per ton.

**Land Management:** This system provides tracking of Deeds and Property tax, Royalty and Wheelage obligations and also calculates and produces payments and other various reports. Provides Statements with YTD information. Automatically interfaces to A/P System.

**Mining Permits:** Tracks Permit information; bonding requirements, revisions, violations and releases throughout the various phases of the permit

**Scales:** This system collects truck ticket information and tracks coal / product movement on Manned or Unmanned systems.



**Coal Sales - Order - Ship - Bill:** Designed as a full A/R system for automated ordering, shipping, and billing process. Integrates with Scales and A/P. Collects origin and destination analysis. Tracks coal or others products from source to destination by truck, rail or barge. Tracks contractual pricing and *analysis* specifications. Detail order information per shipment. Inventory stockpile quantities, analysis and costs for various stockpiles. Hauler statements for payments when integrated with A/P system. Invoices can be generated from shipments or manually entered. Reporting on Premium/Penalty based analysis. Comparison of Tonnage shipped vs. Tonnage ordered by order number.

**SynFuels Production & Tracking:** This system operates as a Scales and A/R System. Tracks SynFuel production and sales from source to destination, with analysis.

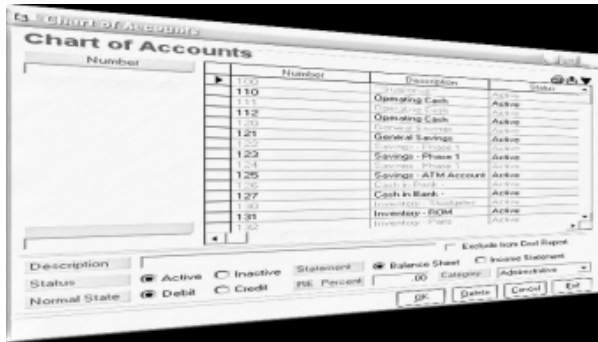


**Salt Mining:** Operates as an A/R system. Tracks the system cost, multi-location stockpiles, sales order info, shipping, billing and receivables by truck, rail or bag. Bag production from bulk inventory. Tracks multiple stockpiles. Assists in Bidding Process.

### Property Liability Insurance

**Management:** Maintains insurance status of contractors, vendors and truckers, including their respective certificate dates; stores photos; tracks policies/coverage on any property.

**Job Costing:** Detail analysis of labor and expense using overhead structures that are defined by the User. Includes automatic billing if required. This system incorporates cost from Inventory, A/P and manual input.



**General Ledger:** Allows users to set up custom statements or versatile reports as desired. Income statement Analysis, Percent of Sales, Per Unit/Per Ton, **Drill Down Inquiry**, Create / Utilize predefined templates. Financial Statements, Balance Sheets and Income Statements in user defined formats. Cost per cubic foot. Trends and Comparative Statements.

**Accounts Payable:** Pay invoices using multiple bank accounts. Flexible payment selection. Check reconciliation. Up to date balance information. Prints 1099's and Cash Requirement Reports. May be interfaced with the Purchase Order system.

**Human Resources:** Maintains information on prospective, current and former employees. Tracks benefits, absenteeism, Certification, task training & re-training. SAFETY SYSTEM / CITATION VIOLATION.

**Payroll:** Unlimited user defined pay types, categories and deduction criteria. Multi-state, Direct Deposit, MSHA, man-hours, reporting, tax reporting.

**Coal Software & Systems provides the following services:**

- Custom Programs
- System Consulting
- Network Consulting



www.coalsoftware.com

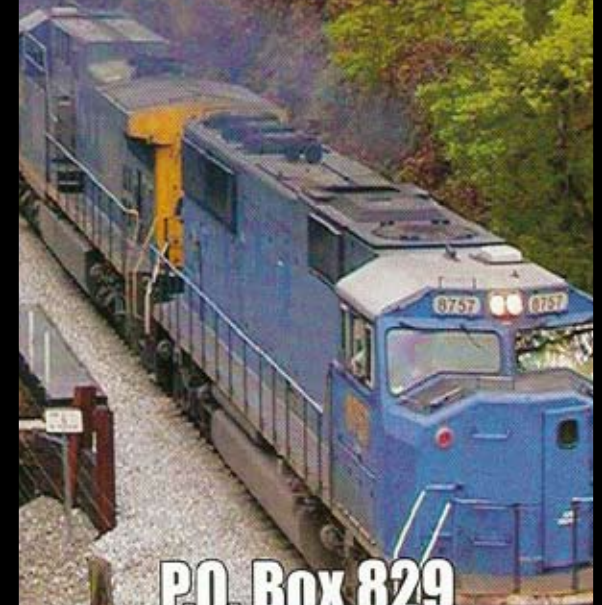
Copyright © 2005 Coal Software & Systems Inc.  
All rights reserved.

# Coal Software & Systems, Inc.

CSS, Inc.

Since 1978

coalsoftware.com



P.O. Box 829

Princeton, WV 24740

Phone (304) 467-7856

Fax (304) 467-8716